



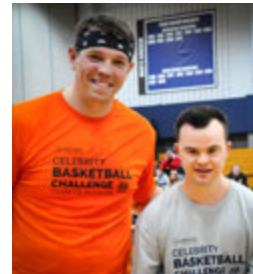
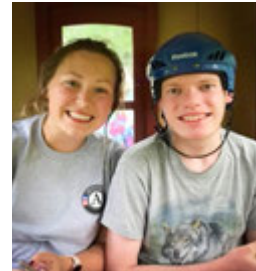
Annual Report 2017-2018

The stories behind our success

OUR MISSION

Increasing independence, maximizing opportunities, minimizing barriers, and enhancing the quality of life for people with disabilities.

www.eastersealswisconsin.com



Letter from the Chair | Easter Seals Wisconsin Board of Directors

Dear Friends,

I am delighted to be able to report to you on the continuing success of meeting our mission at Easter Seals Wisconsin. With your compassionate support, we continue to provide help, hope, and answers for individuals with disabilities and special needs as well as their families, whose needs cannot be overlooked. We are inspired by the life-changing outcomes of our advocacy, our services, and the economic impact that our programs offer to individuals, families, and communities. Although we are providing the opportunity and expertise, the people we serve give back with personal growth, independence, confidence, and triumphs.

It has been an exciting year at Easter Seals Wisconsin, starting with our inaugural Celebrity Basketball Challenge fundraiser, which brought in over \$13,000 in its first year, and the 10th Anniversary of the Skip Ellenbecker Memorial Golf Outing, which has raised over \$100,000 since its inception. Because of the generosity of many, we were able to remodel the Menomoni Cabin which will potentially expand the number of campers served at Camp Wawbeek by 180 each summer. With over 60 volunteers in attendance, the new Kiwanis accessible playground at Camp Wawbeek was largely built in a day! On top of all of this, Camp Wawbeek celebrated its 80th year as the longest, continuously running Easter Seals Camp in the nation.

As you will read in the following report, our programs have again excelled at meeting the needs of our communities. Camp Wawbeek and Respite Camp served over 2,000 campers combined. Our FARM Program served 376 farmers. The Self-Employment Services program

and the Disability Helpline of Outagamie County continue to assist and guide adults with disabilities toward independence and self-sufficiency.

The management, staff, and volunteers of Easter Seals Wisconsin are truly remarkable people, accomplishing exceptional results in the face of an ever-changing environment. While we had a challenging year with the closure of the Donation Center due to Savers closing their Madison store, we know there are challenges we must face and that change is inevitable, and that the work at Easter Seals Wisconsin is first and foremost about the people we serve, their families, and their communities. It is through your generosity and partnership that the foundation for our continuing success has been built.

We thank you for your kindness and support and promise to continue to deliver the preeminent programs you can be proud of.



Pam Birschbach
Chair of the Board
Easter Seals Wisconsin

CLIENTS SERVED | BY THE NUMBERS



1,271

Children and adults enjoyed
Camp Wawbeek



790

Children and adults were served
by our Respite Camp



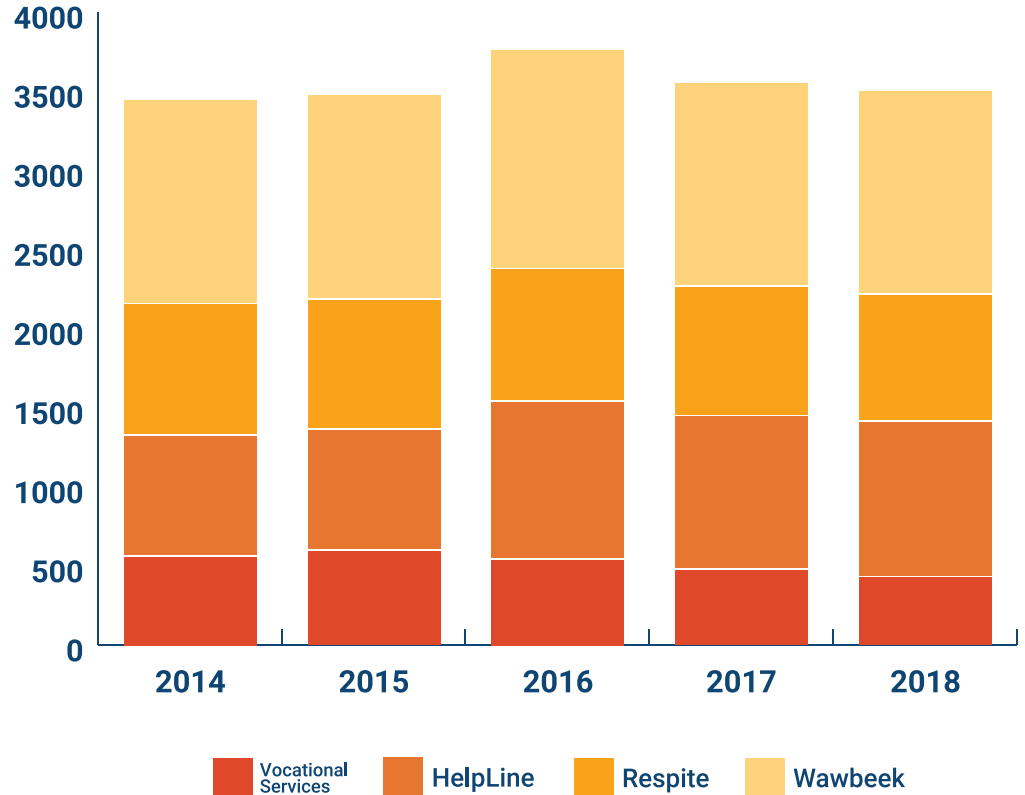
978

Children and adults were served
through the Disability HelpLine of
Outagamie County



381

Benefited from Vocational
Services



Meet our Board of Directors



"The services we offer to children and their families are extraordinary, but I'm especially proud of what we do for adults with disabilities."

- Easter Seals Wisconsin Board Member

Board Officers

Chair: Pamela Birschbach, First Weber Group Realtors

1st Vice Chair: Tom Woodward, Madison Lighting

Treasurer: Jason Klawonn, Northwestern Mutual

Secretary: Charles F. Buell, C.F. Buell Company, LLC

Board Members

Matt Bernstein, TEKsystems

Eric Blankenheim, Blankenheim Services

Wayne Corey, Retired

Andy Crooks, T.R. McKenzie

Joe Gussel, Holiday Wholesale

Pat LeMire, M3 Insurance

Zach Morley, Wisconsin Financial Group

Mary Anne Oemichen, Attorney

Steven R. Peotter, Oregon Community Bank

Dan Poulson, Farmer

Joy Royston, Sports Impressions/JustAGame Fieldhouse

Scott Stevenson, KleenMark

John Teevan, Retired

John C. Van Wie, Van Wie Properties

Honorary Board Members

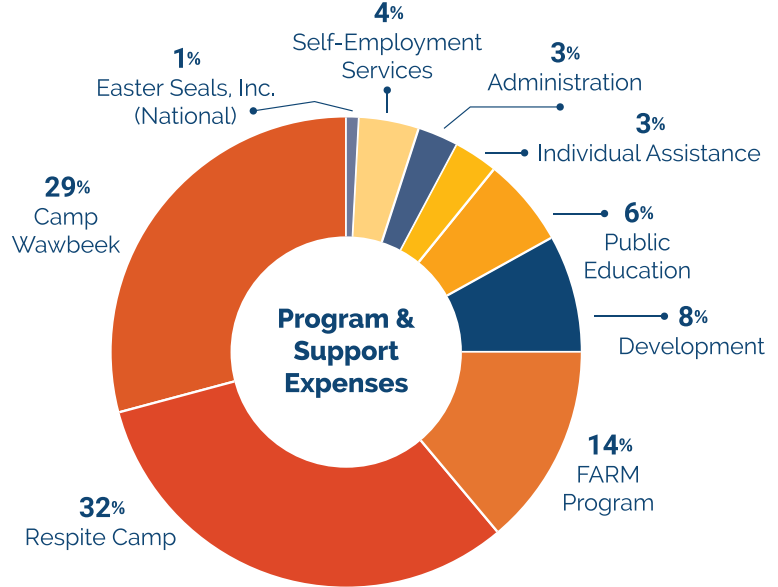
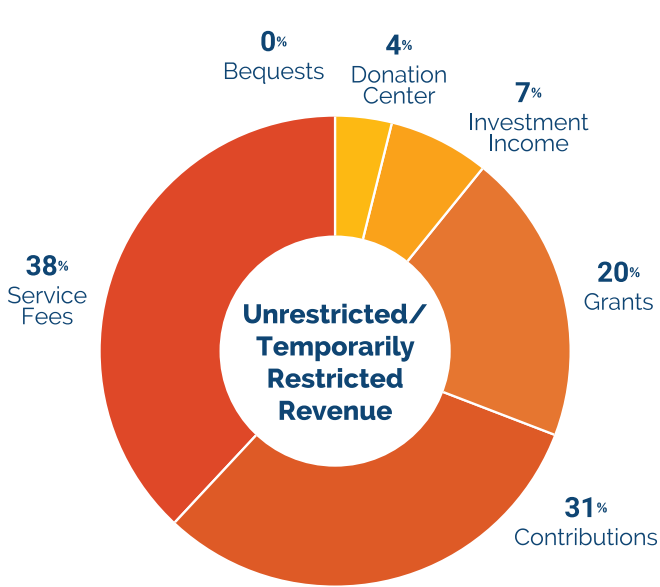
William J. Holley, Peter A. Eltink

Community Representatives & Committee Members

Carol Peirick, Dan Paltz, Melissa Warner,

Jill Makovec, Terri McCarthy

FINANCIALS | FISCAL YEAR 2017-2018



Service Fees	\$1,439,469	Total Revenue
Contributions	\$1,128,375	\$3,692,343
Grants	\$707,650	
Investment Income	\$256,662	Total Net Assets
Donation Center*	\$153,123	\$10,698,049
Bequests	\$7,064	

Program Expenses		Support Expenses	
Camp Wawbeek	\$978,738	Administration	\$113,698
Respite Camp	\$1,074,732	Development	\$266,629
FARM Program	\$471,848	Easter Seals, Inc.	\$39,036
Self-Employment Svcs	\$127,144	Total Support Expense	\$419,363
Individual Assistance	\$85,402		
Public Education	\$181,669		
Total Program Expense	\$2,919,533	TOTAL EXPENSES**	\$3,338,896

Does not include depreciation expense of \$6,460* or \$374,856**. Both charts taken from financial statements audited by SVA, Certified Public Accountants, S.C.

CAMP & RESPITE SERVICES

Easter Seals Wisconsin Camps

Time off from caring for a loved one with disabilities — a respite — is the number one need of families in Wisconsin. To address that need, Easter Seals Wisconsin Camps (Camp Wawbeek and Wisconsin Elks/Easter Seals Respite Camp, both located in Wisconsin Dells) offer well-deserved breaks for parents and caregivers while their loved ones enjoy innovative, recreational opportunities in an accessible environment.

Wisconsin Elks/Easter Seals Respite Camp

is the only statewide, overnight respite program in Wisconsin. It serves hundreds of people around the state, including many from counties where few or no respite programs exist. In 2017-2018, **790 campers attended Respite sessions**. Most Respite campers have severe cognitive, physical, or behavioral disabilities and many are medically fragile, highly disruptive, or cannot be left alone because they could harm themselves or others. Our Respite Camp offers a safe and nurturing place with individualized support and care — providing that all-important break for caregivers.

"This year marked our daughter's 16th year of participation in Respite Camp. She is nonverbal but becomes excited as we enter the driveway, so we know how much she enjoys it! Your efforts are truly appreciated."

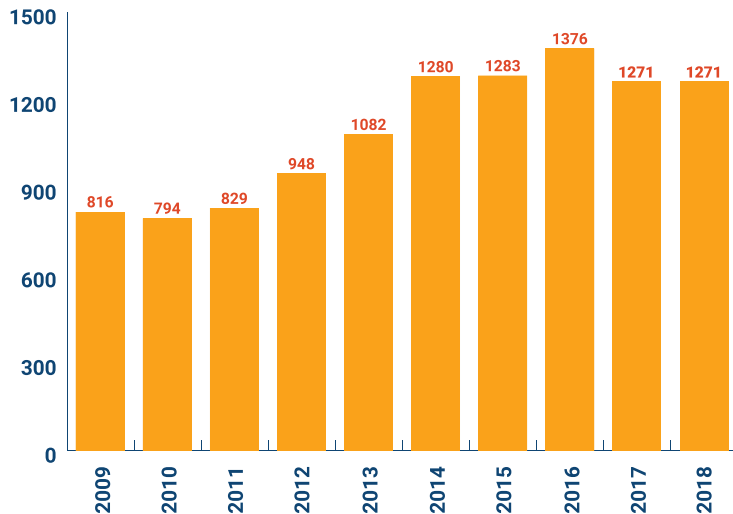
- Letter received from a Respite camper family

Camp Wawbeek

While fun is the top priority at Camp Wawbeek, campers gain new skills, report increased independence, and have the opportunity to make lifelong friends who can provide a year-round network of social support. In 2017-2018, **1,271 campers enjoyed the "Wawbeek Experience."**

Our outstanding staff work hard to ensure that our camp programs continue to evolve to best meet the needs of campers and their families.

10 Years of Wawbeek Campers



AMERICORPS PARTNERSHIP + Veterans Family Camp

AmeriCorps Partnership

The Easter Seals Wisconsin-AmeriCorps Partnership is an integral part of Easter Seals Wisconsin Camps. To successfully serve over 2,000 campers throughout the year, it takes a great commitment to provide the needed support and care for the campers we serve.

In 2017-2018, **45 AmeriCorps members served year-round at both Camp Wawbeek and Respite Camp**, contributing immeasurably to the quality and scope of programs offered. Often, AmeriCorps members return to serve another term at Easter Seals Wisconsin Camps.



"Camp has been a place of growth, support, joy, and connection for me over the past few years. Every weekend is different in its own special way. I love seeing both the campers and counselors connect, express their creativity, and grow personally."

- Former AmeriCorps member and participant in our #whywednesday social media campaign

To follow more stories like this or if you know someone who may be interested in becoming an AmeriCorps member, follow us on Facebook or Instagram and visit www.eastersealswisconsin.com/jobs for regular updates on AmeriCorps positions as well as volunteer opportunities.

Veterans Family Camp

Twice a year, Veterans Family Camp weekend is held at Easter Seals Wisconsin Camps for military veterans and their families, at no charge. At Veterans Family Camp, families can reconnect with each other and network with other veterans while having a fun and relaxing, fully accessible getaway outdoors. Veterans can bring spouses, children, significant others, parents, and grandparents, whether they have recently returned or their service was far in the past. In 2017-2018, **we served 205 veterans and family members.**

One of the unique opportunities offered is the Quilts of Valor ceremony. These beautiful, one-of-a-kind quilts are handmade and presented to each veteran as a token of thanks for their service to our country. The mission of the Quilts of Valor Foundation is "to cover service members and veterans touched by war with comforting and healing Quilts of Valor."

"The variety of activities offered at camp is wonderful but especially the people - finding ties with others who have had similar experiences."

- Letter received from veteran camper

If you are a veteran or know a veteran who may be interested in participating in a Veterans Family Camp weekend, contact us at camp.eastersealswisconsin.com/veterans-family-camp.



Members of Wisconsin Quilts of Valor present a quilt to a veteran.

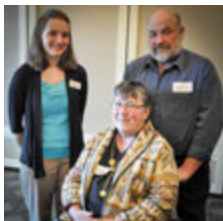
VOCATIONAL SERVICES | FARM & Self-Employment Services

Easter Seals Wisconsin is proud to serve people with disabilities through two primary vocational services programs: **Self-Employment Services** and the **FARM Program**. The purpose of these services is to help people with disabilities explore and pursue employment options. In both programs, Rehabilitation Specialists provide guidance and support, recommend methods of accommodating disabilities, help identify community resources including referrals to funding sources, and provide awareness training and education.

FARM Program

Since 1991, the FARM Program (Farm Assessment and Rehabilitation Methods) has specialized in helping farmers return to farming after a disabling illness or injury, or continue farming with a chronic condition. They can also assist people with disabilities to begin an agricultural career. The FARM Program offers the resources and support to help people achieve their goals of developing a successful farm operation.

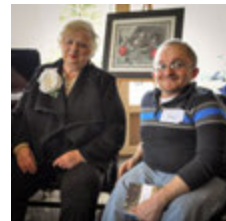
In 2017-2018, **376 farmers were served**. This highly-regarded program serves as the national model for similar programs, not only in methods used and success rates, but also because of their successful partnership with the Wisconsin Division of Vocational Rehabilitation (DVR), and with UW-Extension to form AgrAbility of Wisconsin. The FARM Program provides DVR with on-site assessments and rehabilitation plans for eligible farmers.



Cathy Mess, with husband Clarence, represented the FARM Program at the Starry Night Annual Campaign kickoff.

Self-Employment Services

While traditional workplaces cannot always accommodate every disability, self-employment may offer an alternative path to self-sufficiency. Easter Seals Wisconsin's Self-Employment Services works one-on-one with entrepreneurs with disabilities to evaluate, develop, and implement their business plans to achieve their goal of starting their own business. 87% of clients are successfully operating their business up to four years after assistance from Self-Employment Services.



Self-Employment Services client, Jon Wos, represented the program at the Starry Night Annual Campaign kickoff.

In 2017-2018, **the program worked with five individuals to help their dream of owning a business come true.**

Beginning Farmer

The Beginning Farmer project has been funded for the last three years by a USDA grant received by the FARM Program in partnership with the Wisconsin Farm Center and UW-Extension. The goal of the program is to provide the outreach, guidance, information, and technical assistance necessary for farmers and their families to develop and implement sustainable succession plans to transition their farm to the next generation of beginning farmers. From 2015 to 2018, Easter Seals Wisconsin Rural Rehabilitation Specialists **referred a total of 123 farmers**, and the Wisconsin Farm Center helped them **complete 62 succession plans**, exceeding project goals.

ADDITIONAL SERVICES | HelpLine & Avenues to Understanding

Disability HelpLine of Outagamie County

The Disability HelpLine was created through a bequest from Loretta K. Ricker and serves people with disabilities in Outagamie County.

In 2017-2018, **978 children and adults with disabilities received assistance through the HelpLine** in five core areas:

- Information and assistance for disability-related needs
- Financial assistance or loans of disability-related equipment
- Parent support groups for caregivers of children with disabilities
- Social and recreational programming for families who have a family member with autism
- Guardianship training program



Guardian Assistance Program

Guardians play an important role in the lives of individuals who the court has determined are in need of someone to make decisions for them. Guardians may make decisions as to where a person lives, gets medical care, or manages financial issues. Many people serving as guardians are family members or volunteers.

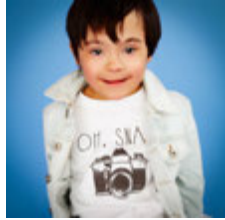
Because many guardians may need assistance in understanding and fulfilling their role, Outagamie County Health and Human Services initiated a Guardian Assistance Program in 2017 to support Outagamie County guardians. The Easter Seals Wisconsin Disability HelpLine was contracted to provide this service for the pilot year. HelpLine staff offer informational trainings to new, current, and interested guardians, as well as individual assistance and support.

Due to its success, the program was renewed and in 2017-2018, the **Guardian Assistance Program served 349 people** in Outagamie County.

Avenues to Understanding

Easter Seals Wisconsin's Avenues to Understanding is a disability awareness educational program offered free of charge to public and private schools, as well as community groups throughout the state. The comprehensive curriculum, created to foster understanding and acceptance, offers units for young people ages 3-18. Download a copy directly from our website: edu.eastersealswisconsin.com.

MAKING A REAL DIFFERENCE | In the lives of real people



Meet Henry

Henry has been camping at Easter Seals Wisconsin Camp Wawbeek for the past two years. And he's also a model! You'll find him in advertisements for Kohl's, Crate&kids by Crate&Barrel, and School Specialty/Abilitations — just to name a few. Henry's parents are his biggest advocates, supporting and encouraging his desire for independence.



Meet Katherine

Katherine has been camping at the Wisconsin Elks/Easter Seals Respite Camp for over 10 years. She was delighted to join us at the Inaugural Celebrity Basketball Challenge this past spring as an Honorary Captain representing Respite Camp and Team Town Bank.



Meet Scott

Scott is an accomplished, inspirational artist who worked with Self-Employment Services to obtain his dream of business ownership. Born with spinal muscular atrophy type 2, his movement is restricted to his right hand. Scott travels throughout the state selling his work at various art shows and installations.



Meet Jerome

Jerome was involved in a serious accident that left him with life-altering injuries. After running a successful farming operation for 40 years, he sought assistance from the FARM Program. He worked with Rural Rehabilitation Specialists to obtain the assistive technology he needed so that he could continue farming until retirement. Jerome represented the FARM Program at this year's 10th Annual Skip Ellenbecker Memorial Golf Outing benefiting farmers with disabilities.

Outstanding Honorees

On October 9, 2018, Easter Seals Wisconsin held its biennial Recognition Dinner at Nakoma Golf Club in Madison, honoring people and organizations that have made a significant impact on the programs and services of Easter Seals Wisconsin and the disability community of Wisconsin. Ten recipients were recognized with awards. Among them was Ray Dabler and the Wisconsin Elks Major Project Committee, receiving the Lifetime Achievement Award.



The Elks first partnered with Easter Seals Wisconsin in 1976 to build the Elks Lodge Kitchen and Dining Hall at Respite Camp in Wisconsin Dells. Over the past 42 years, the organization has raised over \$3.1 million for Respite Camp. Through this partnership, Easter Seals has been able to serve double the number of campers it served previously, over 1,300 children and adults with disabilities each year. The Wisconsin Elks/Easter Seals Respite Camp continues as a refuge and a welcoming place where families know they can safely bring their loved one to enjoy individualized care and outdoor recreation while they take advantage of a break from 24/7 caregiving.

Ray Dabler, retiring Chairman of the Board of Wisconsin Elks Major Project Committee, received this honor for his service to the organization for 46 years.

Honorees also included (pictured on right): the Schwaller Family, Outstanding Fundraising Group; Jim Massey, Outstanding Media; Chuck Buell & John Van Wie, Outstanding Volunteers; American Legion Auxiliary Post 229, Outstanding Service Organization; Jennifer Fiegel-Newlon, Personal Achievement; Adam Faust, Personal Growth & Development; the Leverenz Family, Outstanding Service; and the Ellenbecker Family, Outstanding Volunteer Fundraiser.



FRIENDS OF EASTER SEALS WISCONSIN

Independence \$25,000+

Judy Waterman

Empowerment \$10,000+

John Aspinwall
Thomas & Margaret Bertram
Eric & Dawn Blankenheim
Tom & Margaret Diehl
Dan & Jennifer Gavinski
Jason & Beth Klawonn
Paul & Julie Leverenz
Tom Lucke
John & Joanne Van Wie

Opportunity \$5,000+

Charles & Jean Balsmeider
Andy & Jessie Crooks
Rom & Mary Feest
Dan & Linda Gantz
Gary & Jade Gussel
Joe & Pam Gussel
Mary Krall
Todd & Shari Nelson
Randy Neuman
Paul Price
Dave & Joy Royston
Mark & Kristin Schmitz
John F. Suby
Tom & Patti Woodward

Dignity \$2,500+

Mary Breunig
Chuck & Bonnie Buell
Richard Clack

Robert & Mary Cole
Tom Holtz
Ken & Marilyn Jahn
Gary & Ann Karch
Jim & Marilyn Karch
Joe & Patricia Krantz
Tim McIlwain
Tom & Sandy Muschitz
Scott & April Stevenson
Michael Stickney

Presidents Council \$1,000+

Frank & Renee Acker
Darlene Ballweg
Eric & Pam Birschbach
Robin Buerki
Wayne & Diane Corey
Richard Davies & Gayle Haller
Thomas & Deborah Degnan
Dean & Angie Ellenbecker
T Ellenbecker
Nadine Fakhran
Madelyn Glaeden
Tom Heller
Jean Jacky
Steve & Andrea Janke
Dean & Lisa Kalmerton
Dolores Kantorski & Family
Paul & Anne Karch
Mark Kliewer & Eileen Ahearn
Dick & Connie Kraus
Linda A. Kurth
Aaron & Nicole Martinek
Pat & Pam LeMire

Paul & Tina Molinaro
Jon & Patricia Myers
Matt & Mallory Niesen
Dean & Pat Pierringer
Lucas Price
Barry Richter
Elliott Ross
William & Jane Schloer
Ruth Skoronski
Scott Southworth
Ed Terry
Marty Van Haven
Bob & Mary Weber
Mark & Angela Wieser
John, Marti & Emily Wollner
Jennifer Younger

Sustaining \$500+

Jon & Char Bernander
Robert & Margaret Bernstein
Peter Casey
Thomas & Abby Coyle
Fred & Pat Delmenhorst
Todd Demonte
Ronald Diersen
Jay Ellenbecker
Montgomery Elmer & Pat
McConnell
Raquel Engelke & Todd Korb
Michael & Mary Genske
John Grefsheim
Mark Homan
James Imhoff, III
Harlow & Joanne Johnson

Jeffrey & Debra Krygiel
Frank & Amy Laundrye
Thomas Linley
Robert Loss
William Madlener
Alexander & Mary Lee McKenzie
Zach & Rachel Morley
Jeff & Marci Morris
Randal Neuman
Virginia Nickeson
Dan & Jean Poulson
Thomas & Susan Ripple
Marc & Kelly Schmaltz
Cheryl Shult
Raymond Smith
Randy Steffen
Trent & Christine Sveom
Steven J. Tromp
Mark & Jayne Turner
Mike & Karin Victorson
Tom & Kimberly Walz
Jay Wanserski
P. Andrew & Nancy Ware
John Woodford
Andrew Wooldridge
James Zell

Supporting \$250+

David & Bethann Ambrose
Edith Ann Anderson
Helen Atz
Michael & Jacqueline Barber
Kelly Bauer
Dan Beauvillia

Dick & Jennifer Bergstrom
Janis Blackburn
Jeff Blankenheim
Carlen & Philip Blevins
Thomas & Renee Boldt
Jason & Vesa Bollig
Vicky & Dennis Brasel
Paul & Cyndie Brown
Bryan Buchholz
Kevin & Christina Burke
Michael & Susan Burtch
Shawn & Nancy Carney
Dan Chart
Karen Coleman
Marlyn Cook
Mike & Laurie Crooks
Clark Custer
Glenn & Marybeth Deedon
Richard & Julie Diermeier
Ron & Debbie Dorn
Susie Draeger
Casey & Cheryl Duffey
Frank Dulak
Aaron & Lori Ellenbecker
Dave Ellenbecker
Butch & Sue Ewan
Jon Fadness
Steven Faessler
Rick & Debra Fantini
Virginia Furth
Michael & Lisa Gandrud
Greg & Michelle Gard
Mike & Debbie Gauerke
Charles & Mary Kay Gillespie

FRIENDS OF EASTER SEALS WISCONSIN

Kristopher & Rachel Glanville
Mrs. El Terasawa Grilley
Rick Habeck
Dave & Patti Halberslaben
Matt Haugen
Robert & Cheryl Hays
Scott & Darcy Holverson
Richard & Rose Honeyager
Mark & Sharon Hughes
Chris Jaye
Lois Kania
Donald Kapsner
Carl Klawonn
Patricia Klippel
Norma Kreuziger
Ben La Luzerne
Ed & Pat Lenard
Lori Linley Liebetrau
Stacey & Scott Listol
Rick & Amia Lonigro
Gerald & Mary Luebke
Mel Marohl
Scott Meinhardt
James A. Merwin
Thomas Molinaro
David Morris
Patricia Mrozinski
Brad Niebuhr
Christopher & Anne Noyes
Mary Anne & William Oemichen
Rod & Patsy Opsal
Gregory Pesola
Mary Peterson
Richard & Julie Radtke

Sharon Rapkin
Dave & Roberta Remstad
Pat & Renee Richter
Michael & Barbara Ries
Gerald Ring
Mary Rothe
Frederick & Patricia
Ruegsegger
Bo & Kelly Ryan
Mike & Norah Sanders
Karl & Juliette Schick
Kyle & Jane Schuhmacher
Thomas & Ann Schwabe
Alan Seneczko
Marv & Judy Siegert
Barbara Sorensen
Marion Stevenson
Jim & Beverly Sund
Chris & Jill Tancill
John Teevan
Henry & Kim Theisen
John Uhler
Paul & Sandy Untiet
T.J. Van Wie
Andy & Becca Voeltner
Terry & Mary Warfield
Allen & Martha Watrud
Andrew & Molly Weininger
Jill D. Winkler
Frances Woller
Stuart & Betsy Zadra

Businesses & Organizations
\$250+
4Imprint
A & L Oil, Inc.
Ad Press
Affiliated Dentists, S.C.
Ag Country Farm Credit
Services
All My Friends
Amber's Hideaway
American Family Insurance,
James Nick
American Legion Post 111
American Legion Post 434
Oelschlaeger Dallman
Aqua Finance, Inc.
Aquire Restoration of
Madison, Inc.
Associated Bank
A-Team Construction
Unlimited, Inc.
Axley Attorneys
Ballweg Chevrolet
Ballweg's Guide Service
Bank of Wisconsin Dells
Bergstrom Corporation
Best Price Plumbing, Inc.
BJ Electric
Blackhawk Wawbeek
Foundation
Blankenheim Services
Bobber's Island Grill
Brooks Tractor
Buffalo Phil's Pizza & Grille, LLC

Cascades Paper Group
Century 21 Affiliated
Chalet Lanes & Lounge, Inc.
Charlie Wills Real Estate
Partners
Chick-fil-A
Circle K Wisconsin - Upper
Michigan District
Clack Corporation
Corporate Business Systems
Council for Physically
Challenged Children
Country Bumpkin Farm
Market
Dane County Council of
Snowmobile Clubs
Dells Boat Taverny
Dells/Delton Tavern League
Foundation
Delton Investments LLC
Desert Veterans of WI
Dirty Ducts Cleaning
Dunkin' Donuts
Edgewood College
Elks - Eau Claire Lodge # 402
Elks - Madison Ladies
Auxiliary Lodge # 410
Elks - Waukesha Lodge # 400
Elks - Wausau Lodge # 248
Epsilon Sigma Alpha Chapter
ESA - Beta Omicron
ESA - Beta Zeta Chapter 2556
ESPN Madison
Essity Professional Hygiene NA LLC

Forward Financial Bank
Frank Beer Distributors
Gasser Construction
Gauerke Tire & Auto LLC
General Engineering Co., Inc.
Ghidorzi Hotel Group
Green for Cause
Group Health Cooperative
H.A.N.D.S for Autism
Harley Davidson of Madison
Hausmann-Johnson Insurance
Hawks Landing
Hilti North America
HNI Risk Services, LLC
Ho-Chunk Gaming - Wisconsin
Dells
Holiday Wholesale
Holtz Builders, Inc.
House on the Rock Resort
Ideal Builders
JAG Courts
Janke General Contractors
J.H. Findorff & Son, Inc.
Johnson Bank
Kalahari Resorts
Kenosha Area Disabilities
Service Group
Kiwanis Club of Appleton -
Golden K
Kiwanis Club of Barron
Kiwanis Club of Beaver Dam

FRIENDS OF EASTER SEALS WISCONSIN

Businesses & Organizations \$250+ (continued)

Kiwanis Club of Beloit
 Kiwanis Club of Brookfield
 Kiwanis Club of Burlington
 Kiwanis Club of Cambria
 Kiwanis Club of Dodgeville
 Kiwanis Club of Eau Claire
 Kiwanis Club of Eau Claire -
 Early Risers
 Kiwanis Club of Fond du Lac -
 Fabulous
 Kiwanis Club of Fort Atkinson
 Kiwanis Club of Greater East
 Troy
 Kiwanis Club of Greater Racine
 Kiwanis Club of Janesville
 Kiwanis Club of Janesville -
 Blackhawk Golden K
 Kiwanis Club of Kenosha
 Kiwanis Club of Madison -
 East, Inc.
 Kiwanis Club of Manitowoc -
 Golden K
 Kiwanis Club of Middleton
 Kiwanis Club of Northern Door
 Kiwanis Club of Plover
 Kiwanis Club of Stoughton
 Kiwanis Club of Two Rivers
 Kiwanis Club of Wautoma
 Kiwanis Club of West Bend -
 Noon
 KleenMark
 Klement's Sausage Company

Knights of Columbus -
 Wisconsin State Council
 Knuckleheads Family
 Entertainment Center
 Kraemer Brothers, LLC
 Krantz Electric
 Lady Queen of Peace
 Lake Arrowhead Golf Course
 Lincoln Financial Advisors
 Lions Club of Marinette
 M & M Bakery
 M3 Insurance
 Madison Gas & Electric
 Foundation
 Madison Homebrewers &
 Tasters Guild
 Madison Lighting
 Madison Mallards
 Marathon Cheese Corporation
 Marinette Lodge No 1313
 BPOE of the United States
 of America
 Mermaid Car Wash
 Michelle's Action Angels
 Community Outreach, Inc.
 Miller-Bradford & Risberg
 Miltrim Farms, Inc.
 Modern Woodmen Fraternal
 Financial
 Monk's Bar and Grill
 Moosejaw Pizza & Dells
 Brewing Co.
 Morgan Sand & Gravel
 Mutual of America

Nakoma Golf Club
 National Mutual Benefit
 Neider & Boucher
 Neuman Pools, Inc.
 New Life Pet Adoption Center
 Nicholds Claims Adjusting
 Nicksic Electric
 No Shorts Electric
 Optimist Club of Brilliance, Inc.
 Optimist Club of Mount Horeb
 Oregon Community Bank
 Oregon Sno-Blazers
 Oregon Wisconsin Ducks
 Oshkosh AMVETS Post 7
 Outlets at The Dells
 Park Bank
 Patio Pleasures Pools & Spas
 Pharo Heating Co., Inc.
 Pine Valley Golf Course
 Platt's Construction & Service
 LLC
 Preferred Title
 Q106
 Red Eye Brewing Company
 R. G. Huston Co., Inc.
 Ripple Management
 Riverside & Great Northern
 Railway
 Sauk County ARC
 Schwab Charitable
 S. D. Ellenbecker, Inc.
 SDE Properties
 Seats & Suites, LLC
 Signmaster Custom Signs, Inc.

Siren/Webster Rotary Club
 Sports Impressions/JustAgame
 Fieldhouse
 Springdale Farms
 Start Renting
 Stratford Building Supply, Inc.
 Sub-Zero Wolf Foundation, Inc.
 Summit Credit Union
 Sundara Inn & Spa
 SVA
 SYSCO Food Services of
 Baraboo
 TASC
 TCF National Bank
 The Oaks Golf Course
 The Shoe Box, Ltd.
 The Suby Group
 Thrive Foodery
 Tito's Handmade Vodka
 Tommy Bartlett, Inc.
 Tom's Auto Center
 Town Bank
 Town Bank of Madison
 Toyota of Wausau
 Trappers Turn Golf Club
 T.R. McKenzie, Inc.
 Trempealeau / Buffalo County
 Tavern League
 Two Rivers Signs & Designs of
 Portage
 University Ridge Golf Club
 Utica Nora Trailblazers
 Van Der Geest Farms
 Vector & Ink

Vierbicher
 Wando's
 Waunakee Winter Wanderers
 Welton Enterprises
 Westbridge, LLC
 Westmorland Combined
 Health Fund
 Westward Way Investors
 Wickersham Jewelry
 Wild Rock Golf Club
 Wilderness Hotel & Golf Resort
 Wilderness in the Smokies
 Wisconsin Dells Visitor Bureau
 Wisconsin Elks Major Project
 Wisconsin Guild of Chimney
 Service Specialists
 Wisconsin Knights of Columbus
 Charities, Inc.
 Wisconsin-Upper Michigan Dist.
 of Circle K INTL
 Wisconsin-Upper Michigan
 Kiwanis District
 Zander Solutions
 Zimbrick Fish Hatchery Road

FRIENDS OF EASTER SEALS WISCONSIN

Foundations

A. Sturm and Sons Foundation, Inc.
Adams-Columbia Operation Round Up
Alliant Energy Foundation
American Family Insurance Dreams
Foundation
B.A. & Esther Greenheck Foundation
Bemis Company Foundation
Camp Nebagamon Scholarship Fund
Capital Times Kids Fund
Community Foundation of North Central
Wisconsin
County Materials Corporation
Culver's VIP Foundation, Inc.
Duane & Dorothy Bluemke Foundation
Eau Claire Community Foundation: Jack & Lois
Postlewaite Family Fund
First Weber Group Foundation, Inc.
Garton Family Foundation
H&H Foundation Inc.
Helen & Jeffrey Mattox Family Passthrough
Fund of the Madison Community Foundation
Helen Hardt Family Fund of the Community
Foundation for the Fox Valley
Herbert H. Kohl Charities, Inc.
Jaspersen Family Foundation Inc.
Kiwanis Club of Elm Grove - Golden K
Foundation, Inc.
Kiwanis Club of Fond du Lac - Foundation
Fund, Inc.
Kiwanis Club of La Crosse - Foundation
Kiwanis Club of Lake Winnebago - Foundation,
Inc.
Kiwanis Club of Milwaukee - Foundation, Inc.

Kiwanis Club of Monroe - Foundation
Kiwanis Club of Racine - Foundation
Kiwanis Club of Waukesha - Foundation, Inc.
Kiwanis Club of Wauwatosa - Foundation
Kiwanis Club of West Racine - WI Foundation
Inc.
Knights of Columbus - Bishop Brust # 3702
Foundation, Inc.
Madison Rotary Foundation
Madison West Kiwanis Club Foundation
Oshkosh Area Community Foundation:
Hiwela Youth Fund
Raymond & Marie Goldbach Foundation, Inc
Rotary Club of Appleton: Helen Thom
Roemer Trust
SECURA Insurance Companies Charitable
Fund of the Community Foundation for the
Fox Valley Region
Sheboygan County Service Foundation
Theda & Tamblin Clark Smith Family
Foundation, Inc.
The Gordon Russell Fund, an advised fund of
Silicon Valley Community Foundation
Thrivent Financial for Lutherans Foundation
United Fund of Iowa County, Inc.
Western Kiwanis Foundation of Kenosha, Inc.
Wisconsin Dells Area United Fund
Wisconsin Dells Art Association
Wisconsin Farm Bureau Foundation
Wisconsin-Upper Michigan Kiwanis District
Foundation, Inc.
Wisconsin Knights of Columbus



Thank you, donors!

We gratefully acknowledge all of our donors, for without their generosity and support, the services we offer our clients and the impacts made on their families would not be possible.

SIGNIFICANT MILESTONES | Fiscal Year 2017-2018



On April 7th, we hosted the **Inaugural Celebrity Basketball Challenge** at Madison College, which raised over \$13,000 in its first year.



On August 11th, we hosted the **10th Annual Skip Ellenbecker Memorial Golf Outing** in Marathon. The event has raised over \$100,000 for the FARM Program since its inception.



On February 3rd, the Dane County Council of Snowmobile Clubs hosted its **30th Annual Blizzard Blast**. The organization has donated nearly \$320,000 to Easter Seals Wisconsin since 1988.



On August 15th, we celebrated the **80th anniversary of Camp Wawbeek** with a community build of an accessible playground. Camp Wawbeek is the longest, continuously operating Easter Seals Camp in the nation.

